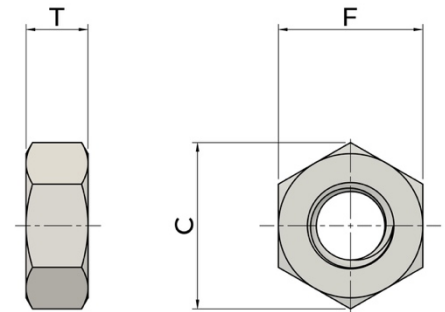


Finished Hex Nuts - Inch Series

1.0 Dimensions: As Per ASME B18.2.2.

Nominal Size or Basic Major Diameter of Thread	F		C		T	
	Width Across Flats		Width Across Corners		Thickness	
	Max	Min	Max	Min	Max	Min
1/4	0.438	0.428	0.505	0.488	0.226	0.212
5/16	0.500	0.489	0.577	0.557	0.273	0.258
3/8	0.563	0.551	0.650	0.628	0.337	0.320
7/16	0.688	0.675	0.794	0.768	0.385	0.365
1/2	0.750	0.736	0.866	0.840	0.448	0.427
9/16	0.875	0.861	1.010	0.982	0.496	0.473
5/8	0.938	0.922	1.083	1.051	0.559	0.535
3/4	1.125	1.088	1.299	1.240	0.665	0.617
7/8	1.312	1.269	1.516	1.447	0.776	0.724
1	1.500	1.450	1.732	1.653	0.887	0.831
1-1/8	1.688	1.631	1.949	1.859	0.999	0.939
1-1/4	1.875	1.812	2.165	2.066	1.094	1.030
1-3/8	2.062	1.994	2.382	2.273	1.206	1.138
1-1/2	2.250	2.175	2.598	2.480	1.317	1.245
1-5/8	2.430	2.350	2.805	2.679	1.416	1.364
1-3/4	2.625	2.538	3.031	2.893	1.540	1.460
1-7/8	2.813	2.722	3.247	3.103	1.651	1.567
2	3.000	2.900	3.464	3.306	1.763	1.675
2-1/4	3.375	3.263	3.897	3.719	1.986	1.890
2-1/2	3.750	3.625	4.330	4.133	2.209	2.105
3	4.500	4.350	5.196	4.959	2.654	2.534



Notes: Thread Class of Fit: 2B

Finished Hex Nuts - Inch Series

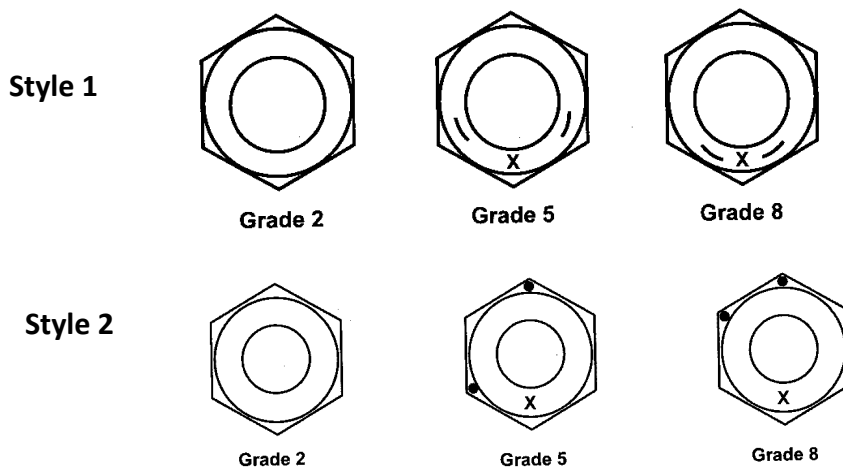
2.0 Mechanical Properties:

2.1 Steel - SAE J995

Classification		Hardness	Proof Load Strength	
Grade	Nominal Size			
2	1/4" Thru 1-1/2 "	32 HRC Maximum	UNC & 8UN	UNF, 12UN & Finer
			90,000 PSI	80,000 PSI
5	1/4" Thru 1-1/2 "	32 HRC Maximum	1/4 " Thru 1 "	
			UNC & 8UN	UNF, 12UN & Finer
			120,000 PSI	109,000 PSI
			Over 1 " Thru 1-1/2 "	
			UNC & 8UN	UNF, 12UN & Finer
			105,000 PSI	94,000 PSI
8	1/4" Thru 1-1/2 "	1/4" Thru 5/8 " : 24 -32 HRC	All Sizes and All Thread Pitches 150,000 PSI	
		Over 5/8" Thru 1 " : 26 -34 HRC		
		Over 1" Thru 1-1/2 " : 26 -36 HRC		

Note : For sizes above 1-1/2 " mechanical properties may be derived from SAE J995

2.2 Steel Grade Marking:



Notes: The nuts will also have manufacturer's marking, in addition to the grade marking as shown above.

Finished Hex Nuts - Inch Series

2.3 Stainless Steel - ASTM F594

Classification		Condition	Proof Load Strength ksi	Rockwell Hardness	Grade Marking
Type	Nominal Size				
304 (18-8)	1 / 4 to 5 / 8 incl	CW1	100 Minimum	B95 to C35	F594C
	3 / 4 to 1 -1 / 2 incl	CW2	85 Minimum	B80 to C35	F594D
316	1 / 4 to 5 / 8 incl	CW1	100 Minimum	B95 to C35	F594G
	3 / 4 to 1 -1 / 2 incl	CW2	85 Minimum	B80 to C35	F594H

(1Ksi = 1000 PSI)

Notes: The nuts will also have manufacturer's marking, in addition to the grade marking as shown above.

3.0 Surface Finish: Plain / Zinc. Zinc plating details given in table below.

Properties	Zinc	Zinc Yellow	Zinc Yellow
Type	Trivalent (Cr+3)	Hexavalent (Cr+6)	Trivalent (Cr+3)
Color	Clear	Yellow	Yellow
Minimum Coating Thickness	0.0001" / 3 Microns or 0.0002" / 5 Microns	0.0001 " /3 Microns or 0.0002" / 5 Microns	0.0001 " /3 Microns or 0.0002" / 5 Microns
Specification	ASTM F1941 / F1941M. Fe/Zn 3AN or Fe/Zn 5AN. ASTM B633 SC1 Type III	ASTM F1941 / F1941M. Fe/Zn 3C or Fe/Zn 5C	ASTM F1941 /F1941M Fe/Zn 3CN or Fe/Zn 5CN